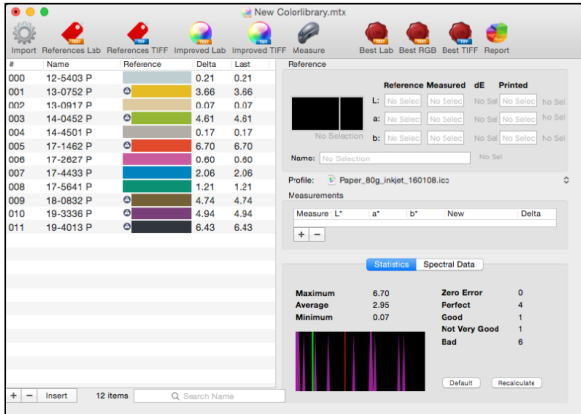


## 2.5 ICC Proof

neoMatch is defined to be able to check measured or imported colors in the ICC profile without printing.

In case you have one job window with measured or loaded colors open, and the ICC Profile is inserted. From **Utilities | Proof All** you can activate the function, and neoMatch will calculate the difference in Delta E between the inserted values and the ICC profile.



In the sub option you can choose in which rendering intent method the color should be proofed: Perceptual, Saturation, Relative or Absolute Colorimetric.

